



PEUGEOT 508: 1FLX269			
Vinnnumber:	VF38E9HD8DL042817	Versionname:	508 SW e-HDi Allure BMP 115PK Aut.
First Registrationdate:	12/08/2013	Fiscalpower:	
Expertise Mileage:	134810	Power Kw:	84
Bodytype:	Break	Body color	Beige
Gearbox:	Automatic	Paint type	Metalic
Transmission:		Rims summer	Aluminium
Fueltype:	Diesel	Oil level	OK
Battery functioning	Yes	Parking lot	2728
Number of doors	5		
Number of seats	5		
Number head rests	5		
Rims summer	Aluminium		
Category	Passenger Car		
Oil level	OK		

Options			
Radio CD		Seats electric F L	
Windows electric F		Seats electric F R	
Windows electric R		Panoramic roof	
Cruise Control		Central consol F	
Steering wheel multifunction		Luggage cover	
Seats F heated		Front parking sensors	
Radio multimedia		Rear parking sensors	
Type of headlighting	Headlighting Xenon	Type of Tow bar	No Tow bar
Type of GPS	GPS big screen color		
Type of Lining	Lining leather		
Type of climate control	Autom climate control		
Head-up Display			

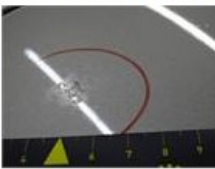
Limited Technical Inspection			
Airco functioning	OK	Battery functioning	Yes
Tires wear profile	OK	Power steering	Yes
Idle position	OK	Sound engine	OK
Engine startingtime	OK	Clutch test	OK
Exhaust gass	OK	Wiper fluid level	OK
Handbrake	OK	Transmission	OK
		Lighting	OK
		Wiperblades	OK

Degree of wear				
Summer tyres:	215/55/17/98 W LightMetal			
	Fr.L.	Michelin: 5 mm	Fr.R.	Michelin: 5 mm
	Re.L.	Michelin: 5 mm	Re.R.	Michelin: 5 mm

Assistance equipment			
Spare wheel	Yes	Jack	Yes
Total cost ex VAT			547,36
Bumper R, Scratch(es), LI - Repair and paint (complete)			211,80



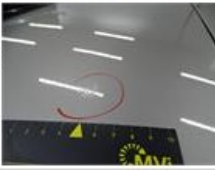
Rear spoiler, Chemical polution, LI - Repair and paint (complete)			115,56
---	--	--	--------



Alloy rim R L, Scratch(es), Acceptable	0,00
--	------

No pictures to display

Roof, Chemical polution, LI - Repair and paint (complete)	220,00
---	--------



Alloy rim F R, Scratch(es), Acceptable	0,00
--	------

No pictures to display