



<b>OPEL Vivaro 2900: 1EHG039</b>			
Vinnumber:	<b>WOLF7B1BECV637240</b>	Versionname:	<b>VIVARO 2900 B/F L2H1 Ecofi.DPF(EU5)115PK</b>
First Registrationdate:	<b>3/12/2012</b>	Fiscalpower:	
Expertise Mileage:	<b>110097</b>	Power Kw:	<b>84</b>
Bodytype:	<b>Transporter</b>	Body color:	<b>White</b>
Gearbox:	<b>MAN 6 VIT</b>	Paint type:	<b>Metalic</b>
Transmission:		Rims summer:	<b>Steel</b>
Fueltype:	<b>Diesel</b>	Oil level:	<b>OK</b>
Battery functioning:	<b>Yes</b>	Parking lot:	<b>2305</b>
Number of doors:	<b>5</b>		
Number of seats:	<b>3</b>		
Number head rests:	<b>3</b>		
Rims summer:	<b>Steel</b>		
Category:	<b>Light Commercial Vehicle</b>		
Oil level:	<b>OK</b>		

<b>Options</b>			
Radio CD		Type of Tow bar	<b>Tow bar fixed</b>
Windows electric F			
Type of headlighting	<b>Headlighting Halogen</b>		
Type of GPS	<b>No GPS</b>		
Type of Lining	<b>Lining fabrics</b>		
Type of climate control	<b>Manual climate control</b>		

<b>Limited Technical Inspection</b>			
Airco functioning	<b>OK</b>	Battery functioning	<b>Yes</b>
Tires wear profile	<b>OK</b>	Power steering	<b>Yes</b>
Idle position	<b>OK</b>	Sound engine	<b>OK</b>
Engine startingtime	<b>OK</b>	Clutch test	<b>OK</b>
Exhaust gass	<b>OK</b>	Wiper fluid level	<b>OK</b>
Handbrake	<b>OK</b>	Transmission	<b>OK</b>
		Lighting	<b>OK</b>
		Wiperblades	<b>OK</b>

<b>Degree of wear</b>				
	<b>215/65/16/109 T Steel</b>			
Summer tyres:	Fr.L.	<b>Goodyear: 6 mm</b>	Fr.R.	<b>Goodyear: 6 mm</b>
	Re.L.	<b>Fulda: 5 mm</b>	Re.R.	<b>Fulda: 5 mm</b>

<b>Assistance equipment</b>	
Spare wheel	<b>Yes</b>
<b>Total cost ex VAT</b>	<b>2826,70</b>
<b>Trunk door panel R, Scratch(es), Smart repair</b>	<b>110,00</b>



<b>Trunk door R R, Dent(s) and scratch(es), It - Spot repair</b>	<b>115,56</b>
--	---------------



Wing trim R R, Missing, E - Replace 69,00



Door F R, Scratch(es), LI - Repair and paint (complete) 238,76



Bumper F, Deformed / Strained, LI - Repair and paint (complete) 158,85



Door moulding Lower R R, Scratch(es), E - Replace 91,50



Seat cover F R, Hole, E - Replace 300,00



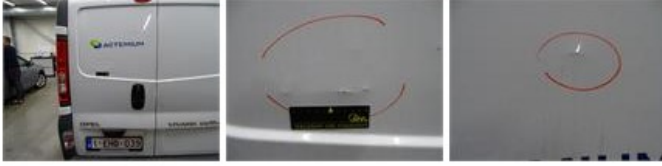
Wing R R, Dent(s) and scratch(es), LI - Repair and paint (complete) 231,15



Wing R L, Dent(s) and scratch(es), LI - Repair and paint (complete) 231,15



Trunk door R L, Dent(s) and scratch(es), It - Spot repair 115,56





Roof, Dent(s), PDR - Paintless dent repair 63,00



Trunk door panel L, Scratch(es), Smart repair 110,00



Ignition key, Missing, E - Replace 150,00



Wing F R, Dent(s) and scratch(es), LI - Repair and paint (complete) 165,13



Bumper F, Scratch(es), Smart repair 110,64



Floor covering F L, Hole, E - Replace 237,00



Bumper R, Dent(s) and scratch(es), E - Replace 329,40

